

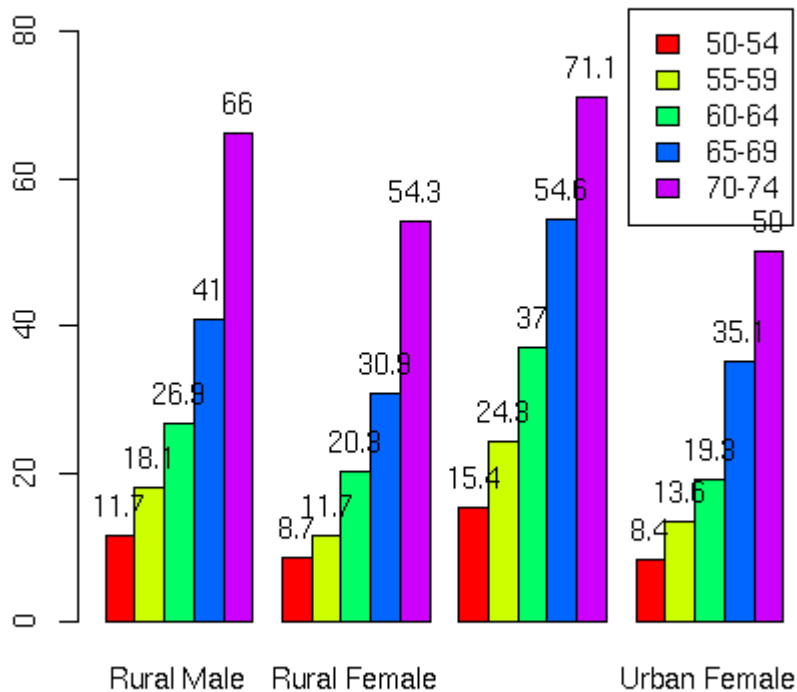
Using dim() seems to give the right results with beside and stacked, even on VADeaths (first 2 plots), or Thomas example (next two plots)

Barplot

Parameters

- Rainbow colors: TRUE
- Beside: TRUE
- Legend: TRUE

Wed Jan 31 19:44:57 2007

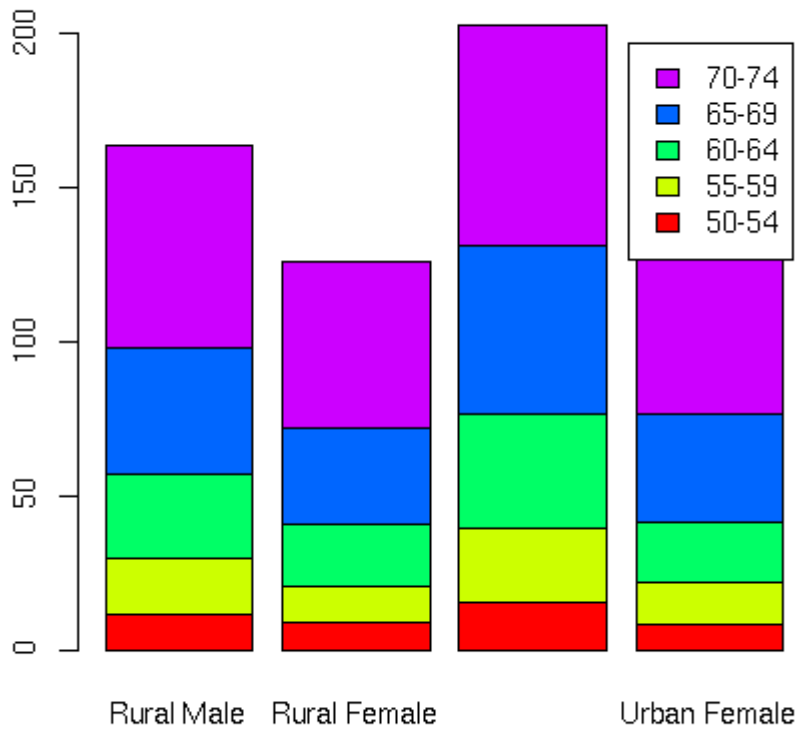


Barplot

Parameters

- Rainbow colors: TRUE
- Beside: FALSE
- Legend: TRUE

Wed Jan 31 19:45:07 2007

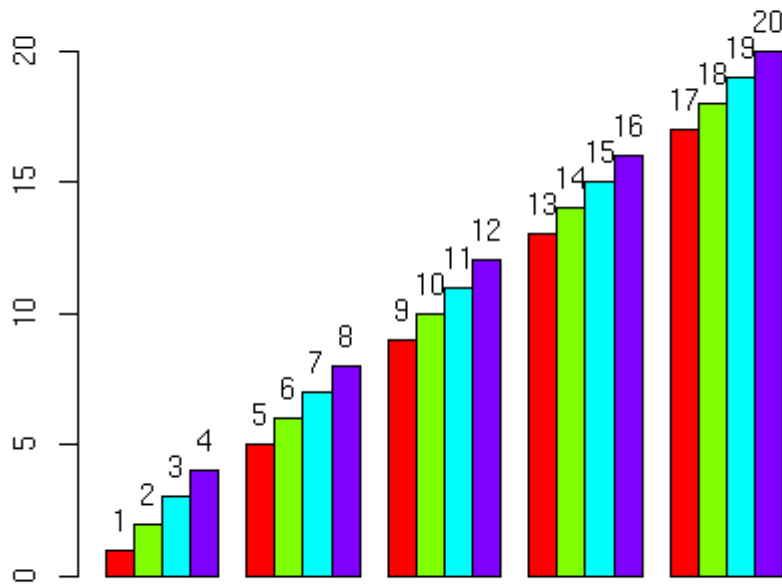


Barplot

Parameters

- Rainbow colors: TRUE
- Beside: TRUE
- Legend: TRUE

Wed Jan 31 19:45:22 2007

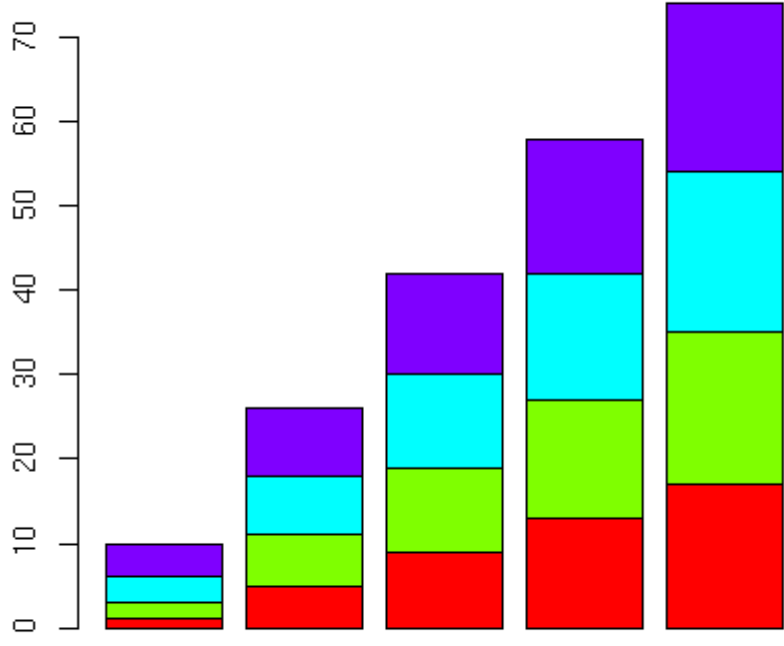


Barplot

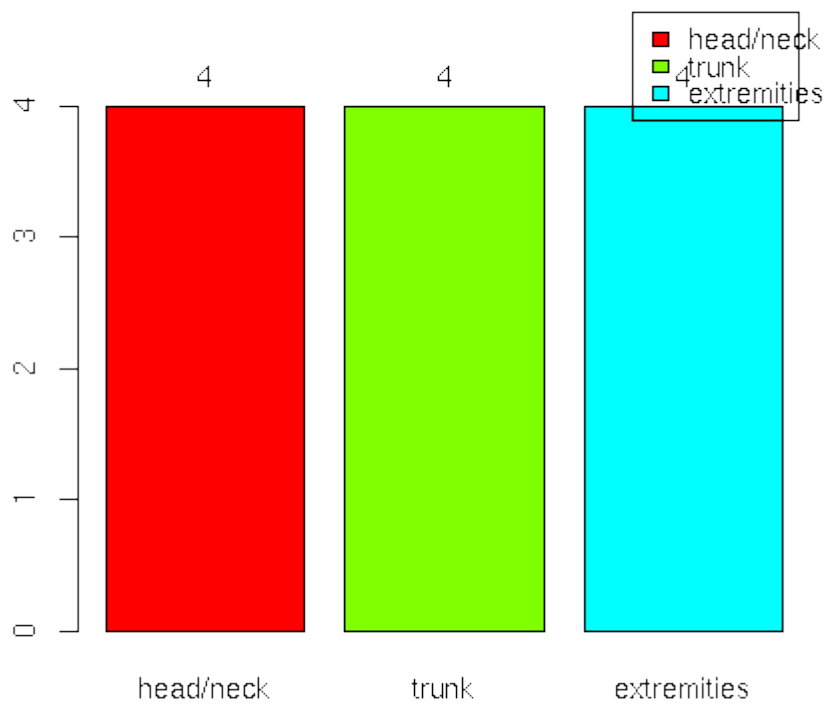
Parameters

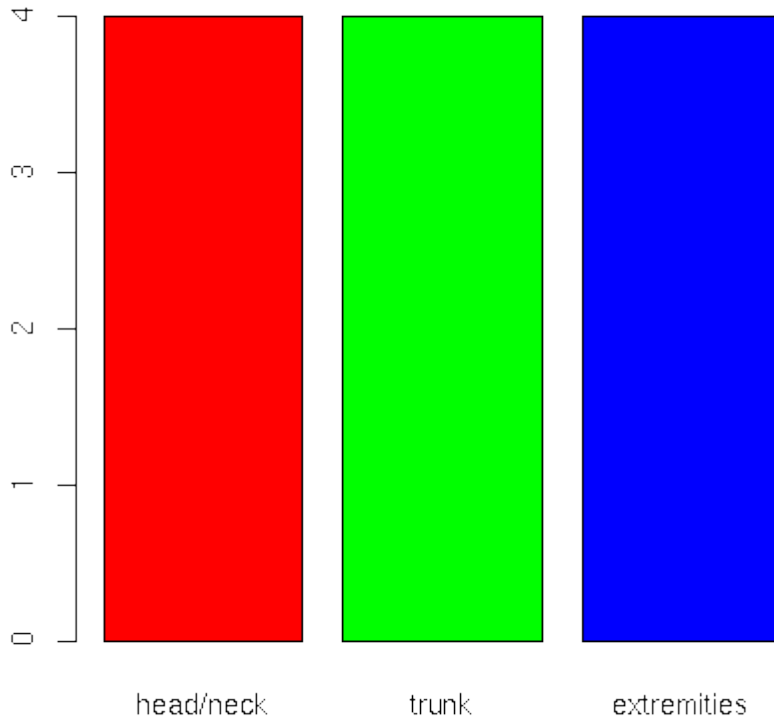
- Rainbow colors: TRUE
- Beside: FALSE
- Legend: TRUE

Wed Jan 31 19:45:39 2007



For factor variables using summary both ways work





However if we use length we have problem with vectors, which should have one color while it should have one

Without using length() we take one color (red), but using length we take as many colors as the values

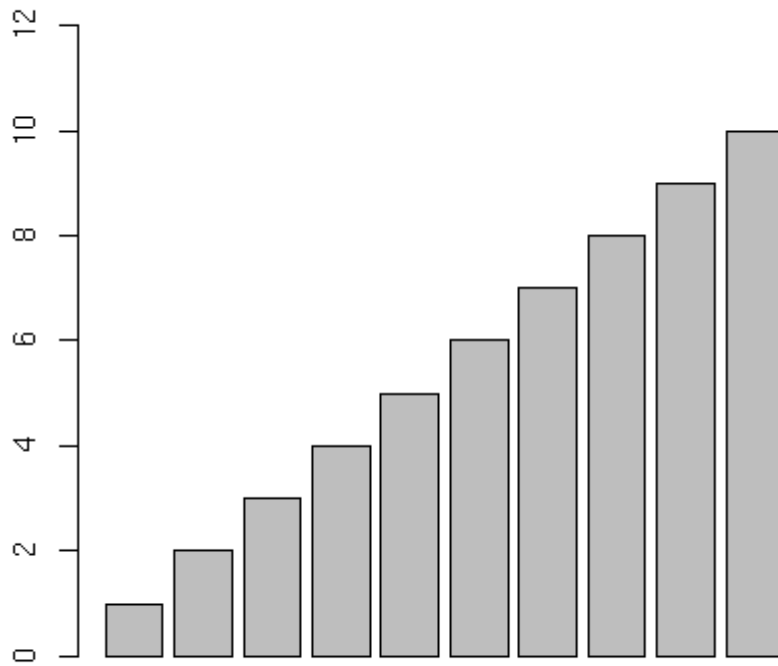
e.g `dd<-c(1:10)`

Barplot

Parameters

- Rainbow colors: FALSE
- Beside: TRUE
- Legend: FALSE

Wed Jan 31 19:56:32 2007



Barplot

Parameters

- Rainbow colors: TRUE
- Beside: TRUE
- Legend: FALSE

Wed Jan 31 19:56:36 2007

